

NAP Plate-rotation analysis with all GPS stations selected on the North American Plate

Primary cluster of intersection points is located near the SW margin of the basin and range province where plate motion begins changing from NAP to Pacific trends

Actual plate-rotation pole(s) map west of Equador near rotation poles determined from NUVEL-1A and APKIM2000 plate-rotation models for the NAP

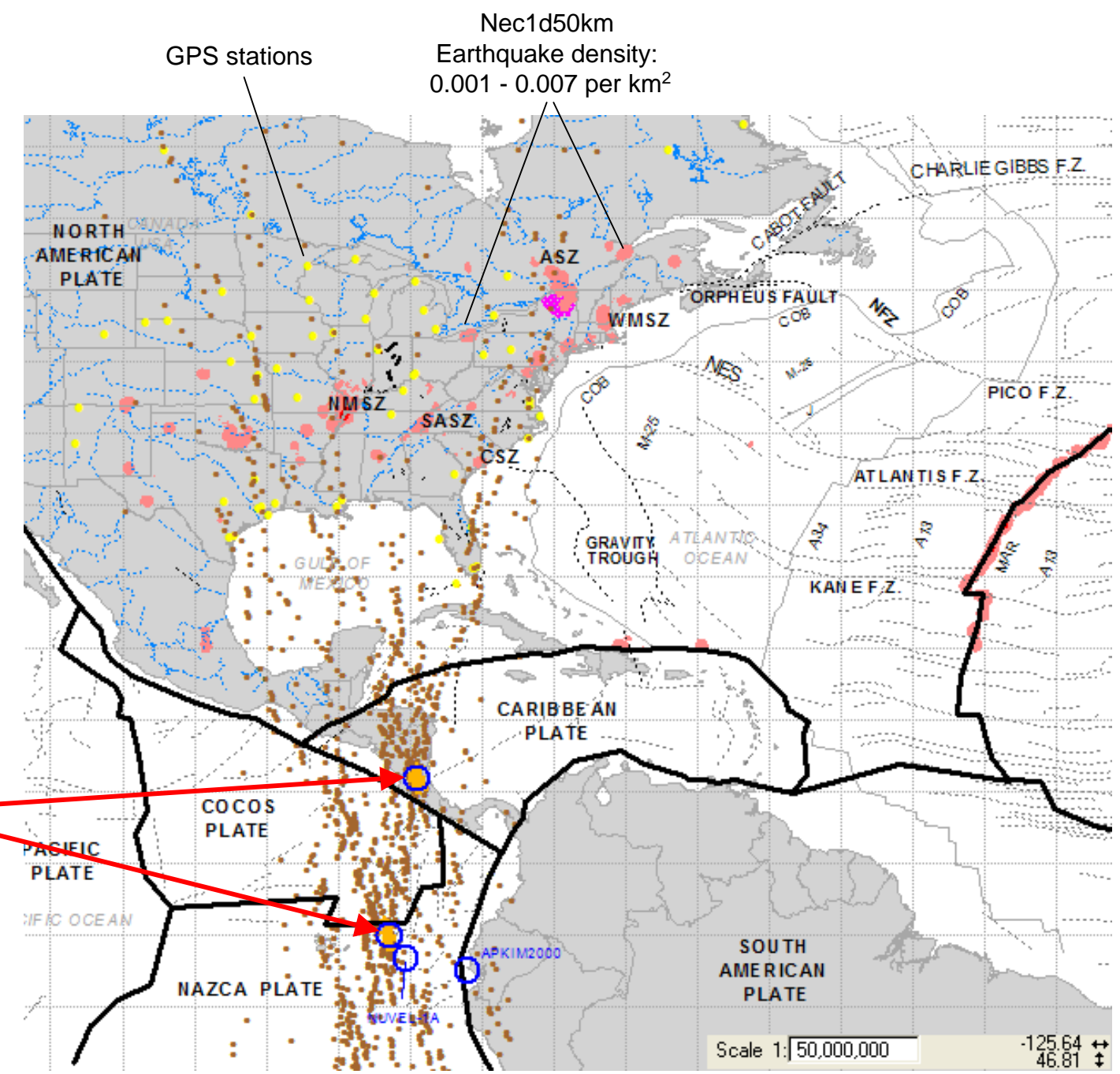


Plate-rotation analysis with subsets of GPS stations selected on the North American Plate

Subsequent analyses that exclude GPS data in the western orogenic belts and stations near active seismogenic zones in mid-continental and eastern regions result in a , 'stable craton' rotation-pole solutions west of Equador and near Panama, suggesting the occurrence of sub-plate rotations within the NAP